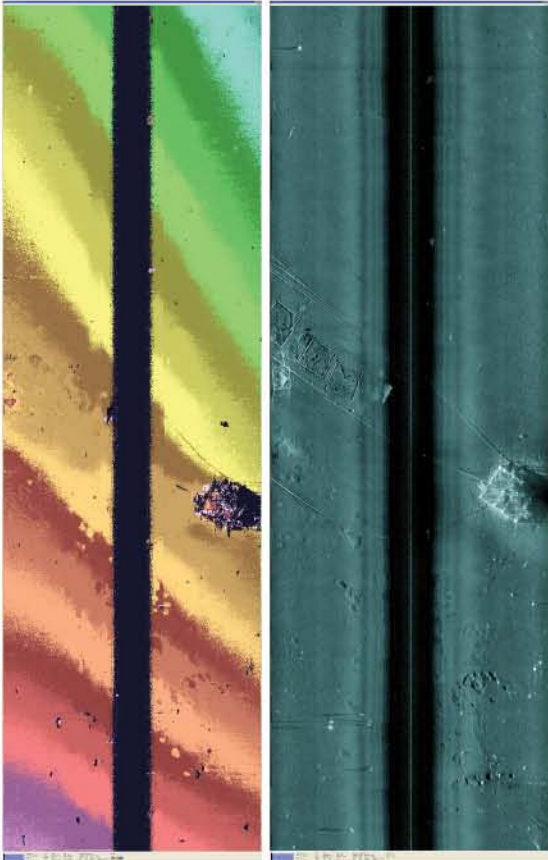


PROSAS SURVEYOR



FEATURES

HIGHLIGHTS

- 400-meter swath imagery at 3 cm × 3 cm resolution
- 3,000-meter depth rating
- Area coverage rate of 2.7 km²/hour
- Integrated onto AUVs, ROTVs, or towfish
- Real-time topside SAS processing
- Real-time geo-referenced data
- Fully integrated high-accuracy navigation system
- GeoTIFF, XTF, or raw data output including data storage
- Simultaneous processing of multibeam sidescan, SAS, bathymetry, and mosaicking
- Data replay with zoom capability
- Interfaces with industry-standard mosaicking and charting software
- Contact Manager database allows operators to view, save, zoom, and recall any objects or areas of interest
- Computer-aided detection and classification with multi-pass fusion processing

OPTIONS

- Interferometric SAS bathymetry
- FRONTRUNNER™ nadir imaging system
- 40-hour subsea recording bottle

SPECIFICATIONS

Resolution	3 cm along and across track at all ranges
Physical receive aperture	1.2 meters
SAS transmit pulse	1, 2, 5, or 10 msec chirp 160 to 190 kHz 220 dB re 1 uPa at 1 m
Data recording	50 Gbytes/hour
Auxiliary sensors	INS, CTD, USBL, DVL
Interface	Gigabit Ethernet
Operational speed	2–10 kts
Maximum operating range	200 meters per side
Bathymetry	Co-located and concurrent interferometric processing 10 cm vertical resolution
Shallow water operation	Dynamic multipath suppression
Power consumption	59W

